

Daily Market Report 22nd July 2019

Top Gainers

Company	(%)	Vol.
C&G	9.52%	100
UCHM	8.57%	3,200
FIRE	5.05%	19,400
CABL	4.60%	19,800
BRIT	3.33%	26,800

(Source: NSE, AIB)

Top Losers

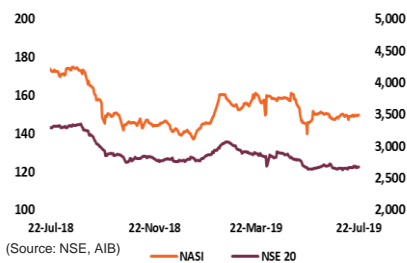
Company	(%)	Vol.
FTGH	-6.23%	3,400
HAFR	-6.15%	18,400
TOTL	-5.37%	4,600
XPRS	-3.13%	1,000
NMG	-1.35%	26,600

(Source: NSE, AIB)

Top Movers

Company	Vol.
SCOM	3,407,400
KCB	1,963,700
EQTY	1,435,700
KPLC	470,700
BBK	354,200

Market Index Movement



Currency

	Today	Previous	% A
USD/KES	103.1028	103.1028	0.00%
EUR/KES	115.9661	115.6739	0.25%
GBP/KES	129.3061	128.5947	0.55%
JPY(100)/KES	95.8684	95.4611	0.43%
YUAN/KES	15.0026	14.9845	0.12%
RUPEE/KES	1.5004	1.4970	0.23%
KES/UGS	35.7986	35.8381	-0.11%
KES/TZS	22.2833	22.3079	-0.11%
RAND/KES	7.4238	7.3943	0.40%

(Source: NSE, AIB)

Dear client,

Below are today highlights:

CURRENCY:

The shilling remained against the dollar today and is trading at **103.10** same as previous trading price.

MONEY MARKET:

The interbank rate increased marginally to **2.02%** from **2.00%** recorded on Thursday. This indicates high liquidity in the market..

EQUITIES:

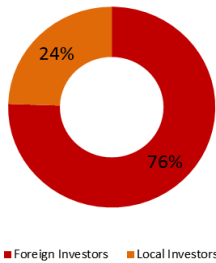
The NSE equity turnover was down **4.31%** to stand at **KES 266Mn** from **KES 278Mn** recorded on Friday last week. The top traders today were Safaricom, KCB and Equity Bank. The counters recorded a turnover of **KES 95Mn**, **KES 78Mn** and **KES 50Mn** respectively. Foreigners were net sellers on all these counters.

SUMMARY OF MARKET STATISTICS

KES	Today	Previous	%	Trend
Equity Turnover	265,825,902	277,793,392	(4.31)	↓
Total Volume Traded	8,413,700	7,823,200	7.55	↑
Market Cap (Bn KES)	2,283.37	2,281.86	0.07	↑
Bond Turnover (Bn KES)	3.09	2.95	4.77	↑
NSE 20 Share Index	2,698.64	2,689.53	0.34	↑
NSE All Share Index	149.92	149.82	0.07	↑
FTSE NSE KENYA 15 Index	186.52	186.00	0.28	↑
FTSE NSE Kenya 25 Index	194.71	194.43	0.14	↑
FTSE NSE KENYA Gov't bond index	98.55	98.50	0.05	↑
Foreign buys (KES)	183,930,631	186,278,915	(1.26)	↓
Foreign Sales (KES)	217,547,470	217,358,495	0.09	↑

(Source: NSE, AIB)

Foreign and Local Participation



Top Foreign Buys

Company	Vol.
KCB	68,074,460
EQTY	57,536,450
SCOM	49,354,130
EABL	5,438,325
WTK	3,199,700

(Source: NSE, AIB)

Top Foreign Sales

Company	Vol.
SCOM	88,637,695
KCB	60,285,635
EQTY	53,692,970
EABL	11,897,325
BBK	2,607,435

(Source: NSE, AIB)

Top Trader (Ksh)

Top Trader (Ksh)	Vol.
SCOM	94,834,320
KCB	78,163,630
EQTY	58,150,770
EABL	12,154,200
WTK	10,083,400
BBK	3,648,855
KPLC	1,844,235
NMG	1,261,530
SCBK	1,078,600
ICDC	756,285
COOP	537,245
NIC	522,790
KEGN	402,310
JUB	261,775

(Source: NSE, AIB)

4 Day Key Market indicators

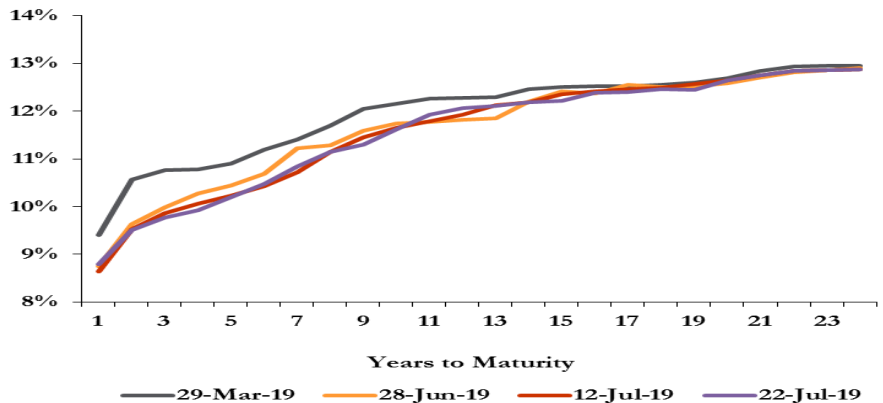
Indicator	22-Jul-19	19-Jul-19	18-Jul-19	17-Jul-19
NSE 20	2698.64	2689.53	2676.71	2,678.73
NASI	149.92	149.82	149.25	149.80
Market Cap (KES Bn)	2283.37	2281.86	2273.19	2281.69
Equity +I Reit turnover (KES Bn)	0.27	0.28	0.74	0.78
Bond Turnover (KES Bn)	3.09	2.95	4.07	5.48

(Source: NSE, AIB)

FIXED INCOME MARKET:

Secondary bond market turnover was up **4.77%** to record **KES 3.09Bn** from **KES 2.95Bn** recorded last Friday. However, the total number of deals remained unchanged from the previous 117. The FXD1/2012/15Yr was today's most traded bond.

DAY'S FEATURE: The yield curve Movement.



The NSE yield curve (22/7/2019) continues to be shaped by easy liquidity in the fixed income markets and exhibits a downward shift in the short term Key rates. We continue to advise investors to consider going long on bonds with shorter duration papers to benefit from the continued steepening of the yield curve. The bonds yields could continue to steepen as a consequence of increased demand and elevated liquidity on the short end of the yield curve.

The table below shows summary of trading activity at the Nairobi Stock Exchange at the end of day.

Security ID	Net Change	Per Change	Closing Price	Prev Closing Price	Total Turnover	Total Volume	Foreign buys	Foreign Sales
C&G	2.00	9.52	23.00	21.00	2,300	100	-	-
UCHM	0.03	8.57	0.38	0.35	1,202	3,200	-	-
FIRE	0.21	5.05	4.37	4.16	84,730	19,400	-	-
CABL	0.11	4.60	2.50	2.39	49,557	19,800	-	-
BRIT	0.26	3.33	8.06	7.80	216,022	26,800	-	8,300
CFC	2.75	2.86	98.75	96.00	29,625	300	-	-
NIC	0.85	2.83	30.90	30.05	522,790	16,900	-	-
BAMB	1.75	1.54	115.75	114.00	127,400	1,100	-	-
HFCK	0.06	1.40	4.34	4.28	56,437	13,000	-	-
COOP	0.15	1.25	12.15	12.00	537,245	44,100	170,800	-
JUB	4.25	1.16	370.75	366.50	261,775	700	-	75,900
KQ	0.05	1.02	4.95	4.90	105,992	21,400	-	-
LKL	0.08	1.00	8.08	8.00	2,428	300	-	-
WTK	1.50	0.92	164.00	162.50	10,083,400	61,400	3,199,700	-
KCB	0.25	0.63	39.80	39.55	78,163,630	1,963,700	68,074,460	60,285,635
NBK	0.02	0.51	3.93	3.91	3,550	900	-	-
TCL	0.02	0.50	4.00	3.98	1,200	300	-	-
I&M	0.25	0.48	52.75	52.50	58,250	1,100	-	-
SCAN	0.05	0.42	12.00	11.95	27,600	2,300	-	-
KEGN	0.02	0.32	6.36	6.34	402,310	63,200	-	49,312
EQTY	0.05	0.12	40.50	40.45	58,150,770	1,435,700	57,536,450	53,692,970
BBK	0.00	0.00	10.30	10.30	3,648,855	354,200	103,000	2,607,435
KNRE	0.00	0.00	3.93	3.93	87,996	22,400	-	1,949
MSC	0.00	0.00	0.38	0.38	98,874	260,500	-	740
BAT	0.00	0.00	520.00	520.00	52,000	100	-	-
KUKZ	0.00	0.00	340.00	340.00	34,000	100	-	-
BOC	0.00	0.00	71.00	71.00	7,100	100	-	-
UMME	0.00	0.00	8.00	8.00	6,400	800	-	-
SGL	0.00	0.00	27.10	27.10	2,710	100	-	-
NBV	0.00	0.00	0.89	0.89	266	300	-	-
ARM	0.00	0.00	5.55	5.55	-	-	-	-
BERG	0.00	0.00	84.50	84.50	-	-	-	-
CARB	0.00	0.00	8.60	8.60	-	-	-	-
DCON	0.00	0.00	0.45	0.45	-	-	-	-
DTK	0.00	0.00	115.00	115.00	-	-	-	-
EGAD	0.00	0.00	13.95	13.95	-	-	-	-
FAHR	0.00	0.00	8.84	8.84	-	-	-	-
GLD	0.00	0.00	1235.00	1235.00	-	-	-	-
KENO	0.00	0.00	22.00	22.00	-	-	-	-
KURV	0.00	0.00	1500.00	1500.00	-	-	-	-
LIMIT	0.00	0.00	470.00	470.00	-	-	-	-
OCH	0.00	0.00	2.60	2.60	-	-	-	-
ORCH	0.00	0.00	12.60	12.60	-	-	-	-
PAFR	0.00	0.00	19.55	19.55	-	-	-	-
PORT	0.00	0.00	14.30	14.30	-	-	-	-
SASN	0.00	0.00	19.00	19.00	-	-	-	-
SCOM	-0.05	-0.18	27.80	27.85	94,834,320	3,407,400	49,354,130	88,637,695
SCBK	-0.50	-0.25	196.00	196.50	1,078,600	5,500	-	-
TPSE	-0.05	-0.26	19.10	19.15	118,430	6,200	-	-
NSE	-0.05	-0.42	11.95	12.00	258,230	21,600	-	-
ICDC	-0.15	-0.46	32.60	32.75	756,285	23,200	-	-
CIC	-0.02	-0.57	3.47	3.49	64,212	18,500	-	-
KPLC	-0.03	-0.76	3.92	3.95	1,844,235	470,700	-	-
KAPC	-0.75	-0.83	90.00	90.75	225,200	2,500	-	216,000
CFCI	-0.10	-0.91	10.90	11.00	6,540	600	-	-
EVRD	-0.01	-1.00	0.99	1.00	7,163	7,200	-	200
EABL	-2.25	-1.13	196.50	198.75	12,154,200	61,800	5,438,325	11,897,325
UNGA	-0.50	-1.35	36.50	37.00	7,300	200	-	-
NMG	-0.65	-1.35	47.40	48.05	1,261,530	26,600	47,000	-
XPRS	-0.20	-3.13	6.18	6.38	6,180	1,000	-	-
TOTL	-1.55	-5.37	27.30	28.85	125,615	4,600	-	-
HAFR	-0.04	-6.15	0.61	0.65	11,211	18,400	-	-
FTGH	-0.16	-6.23	2.41	2.57	8,200	3,400	-	-

CONTACTS:

Research Desk
Sarah Wang

wangas@aibcapital.com
(+254) 711047105

Victor Koech

koechv@aibcapital.com
(+254) 711047133

Equities Dealing
Bernard Kung'u

kungub@aibcapital.com
(+254) 711047108

Benard Gichuru

gichurub@aibcapital.com
(+254) 711047111

Brian Tanui

tanuib@aibcapital.com
(+254) 711047124

Bond Dealing
Crispus Otieno

otienoc@aibcapital.com
(+254) 711047113

Titus Marenye

marenyet@aibcapital.com
(+254) 711047118

Disclaimer:

Though utmost care has been taken in the preparation of this report, we do not guarantee the accuracy or completeness of the information contained herein nor will AIB Capital Ltd be held liable for the information contained herein. The views expressed in this report are solely those of the Research Department and are subject to change without notice.

LXM USA LLP assumes responsibility for the research report's content in regards to Research distributed in the US. US recipients of this research who wish to effect transactions in any security covered by this report must do so with or through LXM USA LLP. Transactions in such securities by recipients of the report are to be effected only through LXM US

LLP in accordance with Rule 15a-6.1. The research analysts preparing the research report are resident outside the United States and are not associated persons of any US regulated broker-dealer and that therefore the analyst(s) is/are not subject to supervision by a US broker-dealer, and are not required to satisfy the regulatory licensing requirements of FINRA or required to otherwise comply with US rules or regulations regarding, among other things, communications with a subject company, public appearances and trading securities held by a research analyst account.